

KANTECH

Sales Guide

# EntraPass v4.0

Access Control Software

*“This newest version of EntraPass enables customers to secure their property and personnel more effectively while utilizing a host of exciting new access control tools and features – from the new Kantech™ IP Link device to EntraPass workspaces and muster reports.”*

LEON LANGLAIS | General Manager of Tyco International's Kantech brand of solutions

## HIGHLIGHTS

- 2 Exciting Features
- 3 Advantages of EntraPass v4.0
- 3 Key Features of EntraPass v4.0
- 10 What Type of Customer and What Market?
- 12 FAQ
- 13 Model Numbers & Descriptions
- 15 Sales Tools at a Glance



**Executive Brief |** The hallmark of an EntraPass access control system is its reliability and ease of use. EntraPass v4.0 continues this tradition but also brings added robustness. With support for Kantech™ IP Link, new features, and enhanced functionality, EntraPass v4.0 enables customers to operate their security system more securely, quickly, and efficiently.

tyco

# Exciting Features

- Access control badges are now fully functional during data reloads in EntraPass Global Edition, which ensures cardholders have access to buildings even during the reloading of security information to all controllers. (EntraPass Global Edition only)
- EntraPass v4.0 provides enhanced reliability and improved performance by utilizing cutting-edge processor technology
- EntraPass workspaces let you control what operators can see based on user privileges
- Multiple card display formats allow card numbers to be accurately displayed on the operator's screen in installations where more than one card technology is being used
- Generate muster reports from triggered events to provide greater security and protection, particularly in crisis scenarios (EntraPass Global Edition only)
- Integration with American Dynamics™ EDVR for live video recording at an economical price (EntraPass Corporate Edition and EntraPass Global Edition)
- Update card records quickly and securely with the new EntraPass WebStation (EntraPass Corporate Edition and EntraPass Global Edition)
- Supports Kantech IP Link, which provides a secure IP solution that enables your customers to operate their access control system more efficiently and securely over a network
- With the addition of powerful web functionality and support for IP Link, EntraPass now provides a high-performing Managed Access Control solution for central monitoring stations
- New optional Software Support Agreement (SSA) program provides 12 months of free upgrades and end user online training
- EntraPass now supports Windows Vista®



# Advantages of EntraPass v4.0

EntraPass v4.0 is a suite of high performance software solutions that delivers reliable access control for facilities of every size. Available in Special, Corporate, and Global Editions, EntraPass offers single and multiple workstation access control solutions in a distributed architecture that make it an ideal choice for small to growing businesses worldwide.

**Access control badges are now fully functional during data reloads in EntraPass Global Edition, which ensures cardholders have access to buildings even during the reloading of security information to all controllers.** In previous versions of EntraPass

Global Edition, doors were temporarily locked until the data was reloaded, which, depending on the size of the

## Key Features of EntraPass v4.0

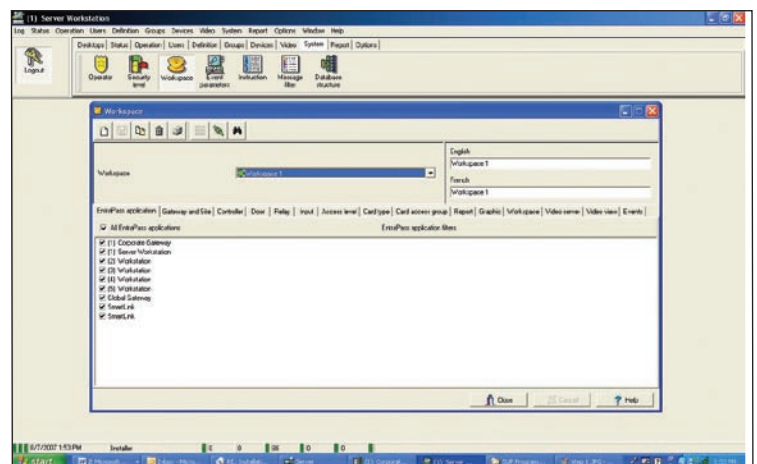
installation, could take more than 45 minutes. With EntraPass v4.0, customers do not have to be concerned about door lock-outs while security information is reloaded to all controllers.

**EntraPass v4.0 provides enhanced reliability and improved performance by utilizing cutting-edge processor technology.** EntraPass now works fully with multiple CPU and Hyper-Threading Technology (allows multiple communication paths to the CPU) resulting in increased processor performance, improved product stability, and optimized response time.

**EntraPass workspaces let you control what operators can see based on user privileges.** EntraPass workspaces simplify and improve system management by providing customized views

of the EntraPass system based on an operator's access privileges.

Once a security level is defined for an operator, the system administrator configures his/her workspace to identify what areas of the EntraPass system the operator can access and view, such as desktop display, card fields, etc. Each workspace is created and defined in terms of devices



– gateways, sites, doors, relays, etc. Workspaces are extremely useful because they allow you to create different views of the EntraPass system that can be saved and applied to any user.

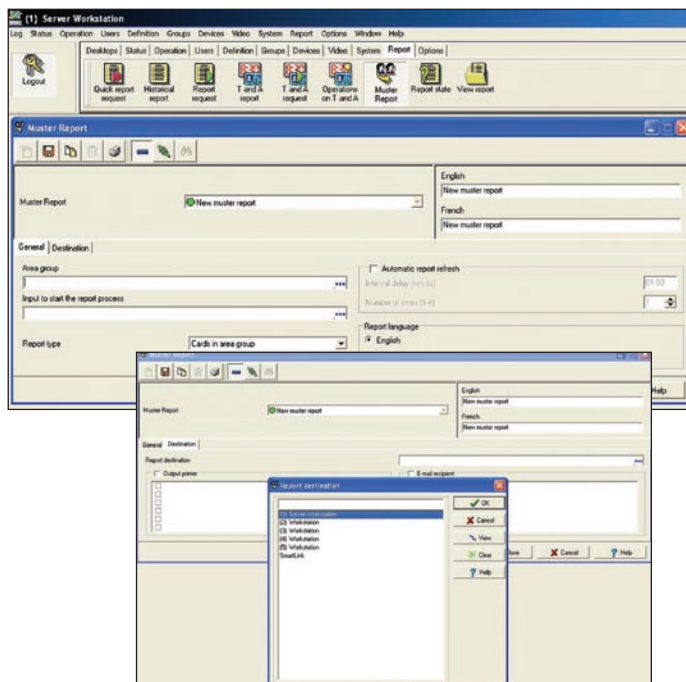
This feature also enables an operator to further create and refine his/her own views to filter out additional components that are not necessary for day-to-day operations. The operator can create, save, and reuse temporary workspaces. This feature is useful whenever a recurring operation is needed on the system, such as creating reports.

Workspaces can also be applied to desktops to specify which events and messages can be displayed on a particular PC. An installer can use such a workspace in addition to his/her operator workspace to filter messages during a customer installation.

### Multiple card display formats allow card numbers to be accurately displayed on the operator's screen when more than one card technology is being used.

EntraPass v4.0 provides more flexibility to customers who use a variety of reader technologies by allowing them to configure EntraPass to read multiple card formats. Once a card's format is specified, its card number will be correctly displayed on the operator's screen, which allows for more accurate reports to track personnel.

It is also now possible to hide the card number from desktops and reports, making it easy for system administrators or unidentified security personnel to be shadowed in reports or in office/building searches.



### Generate master reports from triggered events to provide greater security and protection, particularly in crisis scenarios (EntraPass Global Edition Only).

With the new master report feature from EntraPass you can print a list of personnel in a predefined group of areas to determine who is present and if the area is secure when an alarm or event is triggered. The report can be sent to specified printers or delivered to email addresses. Mustering is critical for emergency situations where it is crucial to evacuate a building as quickly as possible. In a large, multi-site building it can often be difficult to determine if everyone has left the building. To

be counted out of an area, personnel must badge at predefined locations and each new muster report is updated accordingly to let officials know exactly who is left behind.

Muster reports now include a parking management function which notifies users when a parking area is exceeding its capacity and will disallow access to the area.

### **Integration with American Dynamics EDVR for live video recording at an economical price (EntraPass Corporate Edition and EntraPass Global Edition).**

EntraPass v4.0 supports the American Dynamics EDVR and provides your customers with an integrated video and access control solution with a solid feature set at an economical price, without compromising video quality. The EDVR is an extremely reliable digital video recorder that is easy to



install and doesn't include the drawbacks of bulky VCR tapes that can degrade over a period of time.

American Dynamics EDVR is available in

4-, 9-, and 16-channel desktop or rack-mountable configurations. Choose from four live viewing modes: basic live view, freeze, 2X digital zoom, and custom sequencing. Additionally, your customers can set up to eight recording schedules and play back the recorded video at variable speeds. The EDVR provides image resolution at 60 ips NTSC (50 ips PAL) and stores video as MJPEG images. EDVR is also accessible from a web browser that lets your customers search for video, monitor and configure cameras, and receive alarm notifications from a remote workstation.

### **Update card records quickly and securely with the new EntraPass WebStation (EntraPass Corporate Edition and EntraPass Global Edition).**

EntraPass Corporate Edition and Global Edition customers can now create, modify, and delete card records from remote locations. Rather than modifying cards at each company location, a user can change



card records directly from a web browser using EntraPass WebStation. The card management web interface requires EntraPass v4.0 and is deployed on a new or existing Microsoft® IIS server (Windows® 2003, XP,

## Entering the Managed Access Control Market

With the addition of powerful web functionality and support for IP Link, EntraPass now provides a high-performing Managed Access Control solution ideal for central monitoring stations seeking a cost-effective option to offer to their commercial customers.

With the full range of advanced solutions that central monitoring stations offer, including access control, video surveillance, intrusion detection, and security management (guard tours, remote video management, video/alarm verification), the Kantech EntraPass solution offers tremendous performance and value to both central monitoring stations and their customers.

or Vista). Available as an option, EntraPass WebStation is enabled with concurrent connection licenses that can be purchased for EntraPass Corporate and Global Editions.

**Supports Kantech IP Link, which provides a secure IP solution that enables your customers to operate their access control system more efficiently and securely over a network.** Unlike similar

devices, IP Link manages polling of door controllers and communicates with EntraPass Special Edition, EntraPass Corporate Edition, or EntraPass Global Edition (using a Corporate Gateway) only when an event has occurred.

Communication integrity is ensured through a heartbeat signal which is sent at a regular interval to the EntraPass software. This significantly reduces the amount of

bandwidth required for your customers to manage their access control system over a network.

Kantech IP Link is easy to set up. Use an EntraPass workstation, a web browser, or the KT-Finder, an intuitive stand-alone application to locate and configure the IP Link. The IP Link uses 128-bit AES encryption to communicate with the system and ensures secure communication when used over the Internet. Customers seeking a fully secure IP solution for their company will easily find that the Kantech IP Link is their ideal choice.



## New optional Software Support Agreement (SSA) program provides 12 months of free updates and end user online training.<sup>1</sup>

As EntraPass continues to deliver new features and enhancements, it is more important than ever that your customers have the education and tools necessary to most effectively use the solution.

Effective with this release, we are implementing a Software Support Agreement (SSA) program. These optional SSAs ensure that your customers receive new functionality and end user online training with software updates. EntraPass customers who choose not to purchase an SSA will still continue to receive technical support for their current installations and can purchase options but will not receive new features as they become available. Customers who purchase and activate SSAs during the first year are entitled to a bonus of up to 12 months of online training.

Depending on the EntraPass software version your customer has installed, software updates and online training are available as follows:

CUSTOMER STATUS	ONLINE TRAINING	SOFTWARE UPDATES	TECHNICAL SUPPORT
<b>EntraPass v4.0 with SSA</b>	1st year of SSA program launch: 24 months	1st year of SSA program launch: 24 months	Yes
	After 1st year of SSA program launch: 12 months	After 1st year of SSA program launch: 12 months	Yes
<b>EntraPass v4.0 without SSA</b>	No	12 months – SSA needed for continued updates after 12 months	Yes
<b>EntraPass v3.18 installed after Jan. 1, 2007</b>	No	Free upgrade to 4.0, then 12 months from the original install date	Yes
<b>EntraPass prior to v3.18</b>	No	Updates up to v3.18	Yes
<b>Expired SSA</b>	No	Software updates are not available after SSA expiration. If SSA is reactivated, one year updates begin on new SSA activation date	Yes

(1) Online training currently not available; will be available soon.

## SSAs are obtained by purchasing Kantech tokens.<sup>2</sup>

The size of your customer's EntraPass installation (Special, Corporate, or Global Edition), along with the number of installed options, will determine how many tokens will be required to purchase their SSA plan. The base EntraPass systems require a minimum of one to three tokens per year to maintain. To this base a number of tokens need to be added, depending on the options you have installed on your system. Below is an easy calculation table. You can also log into EntraPass and go into the server registration window to obtain this information already calculated by your system.

	DETAILS	TOKENS PER YEAR
<b>System</b>		
EntraPass Special Base System	System only — no options available	1
EntraPass Corporate Base System	System before options	1
EntraPass Global Base System	System before options	3
<b>Option</b>		
Web Concurrent Licenses	For each 3 concurrent licenses	1
Video Vault	For each Video Vault	1
Card Gateway	For each Card Gateway	1
Redundant Server	For redundancy server option	1
Workstations Corporate	For every pack of 4 active workstations	1
Workstations Global	For every pack of 5 active workstations	1
Corporate Gateways	Excluded from calculation	0
Global Gateways	Excluded from calculation	0
SmartLinks	Excluded from calculation	0
Server Workstation (EntraPass Corporate Edition or EntraPass Global Edition)	Excluded from calculation	0

(2) Refer to the new model numbers listed on pages 13–14.



**EntraPass now supports Windows Vista.** We have upgraded the EntraPass v4.0 system to support Windows Vista which enables customers running EntraPass v4.0 on this platform to seamlessly integrate with any EntraPass access control system. At this time, however, video functionalities are not supported with Windows Vista.

### EntraPass Feature/Enhancements Compatibility Chart

	ENTRAPASS SPECIAL EDITION	ENTRAPASS CORPORATE EDITION	ENTRAPASS GLOBAL EDITION
Kantech IP Link Support	Yes	Yes	Yes, with Corporate Gateway only
EntraPass Workspaces	Yes	Yes	Yes
Multiple Card Display Formats	Yes	Yes	Yes
Muster Reports	No	No	Yes
American Dynamics EDVR Support	No	Yes	Yes
EntraPass WebStation	No	Yes	Yes
SSA and Online Training	Yes	Yes	Yes
Windows Vista Support	Yes	Yes	Yes
Enhanced System Performance: Hyper-Threading, Multiple CPU Support	Yes	Yes	Yes
Badges Fully Functional During Controller Reset and System Updates	No	No	Yes

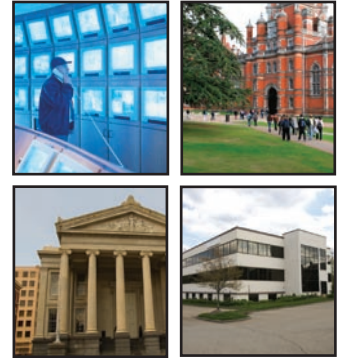
# What Type of Customer and What Market?

## CUSTOMER PROFILE

- Wide range, from small, low-end to highly distributed, networked environment
- Requires fast, easy deployment and maintenance
- High security required
- Customers seeking third-party management and monitoring of their security system

## IDEAL INDUSTRY APPLICATIONS

- Small and mid-level office buildings
- Financial institutions
- Multi-site corporations
- Colleges and universities
- Hospitals
- Government applications
- Pharmaceuticals
- Central monitoring stations



## The powerful new functionality of EntraPass makes it an ideal solution for customers looking for service from a central monitoring station.

In essence, some businesses choose not to have security staff on-site to manage the company's physical security system but still require their employees and assets to be protected at all times. A central monitoring station fills the role normally occupied by an on-site guard and security system. Kantech's Managed Access Control solution provides the tools necessary to meet those customer demands.

**EntraPass distributed architecture.** The EntraPass server, workstations, gateways, and communications modules are all independent components which are fully secure and networked. This allows a central monitoring station to install and manage a server environment with a certain number of workstations to configure and maintain a large list of customer sites. The hardware portion of the solution is located at the customer site while the data and management portion is located at the monitoring station.

With Kantech IP Link, setting up a new customer site is easy, and larger sites can also be addressed – multiple buildings, for example – with the KT-NCC.

# What makes EntraPass “central station-enabled” for managed access?

**Account Management.** An option in EntraPass now allows central monitoring stations to define an unlimited number of accounts which are totally independent from one another. Monitoring station operators are able to create and manage accounts separately, with no risk of data-sharing between them. This also improves system management and allows central monitoring stations to configure each account differently.

**EntraPass WebStation allows end users to perform basic operations.** When needed, the customer can perform some basic management tasks such as cardholder management via a secure and easy-to-use web interface.

**Central monitoring stations can build services on top of the initial solution.**

Additional products and services can then be offered by the central monitoring station to their end users.

Here are some examples of services that can be built onto our model:

- Video integration
- Alarm integration
- Automated or customer reports
- Remote guard tours
- Card production

**Operating on a Wide Area Network (WAN).** Support of IP Link is the key to managed access in small to medium installations. Controllers can securely and efficiently operate over the network, giving central monitoring stations the ability to monitor access activity remotely. Also, by using the KT-NCC, central monitoring stations can also offer global features to their end users.

**Q: What is the benefit of assigning workspaces to an operator?**

A: Workspaces allow for quick user setup and ensure that your operators don't have access to sensitive, proprietary information that is not aligned with user privileges.

**Q: What is the benefit of a Service Support Agreement (SSA)?**

A: A one-year SSA ensures your customers continue to receive updates for new features released during the contracted year with the added benefit of online training.

**Q: What's the upgrade path for EntraPass v3.18 customers?**

A: The upgrade from v3.18 to v4.0 is free for customers who purchased v3.18 and installed their system after Jan. 1, 2007.

This generally applies to all v3.18 customers. Customers can

access the upgrade through [www.membercenter/kantech.com](http://www.membercenter/kantech.com) and download the software. No license key will be required in this case.

**Q: I currently have EntraPass v3.18. Can I purchase an SSA for it?**

A: EntraPass v3.18 does not support SSAs. You will first need to upgrade your system to v4.0 and purchase the one-year SSA plan.

**Q: What's the benefit of purchasing the SSA program now?**

A: During the first year of the new SSA program, we are offering 12 months of online training and software updates, effectively entitling you to receive 24 months of online training and 24 months of software updates for the price of 12 months.

**Q: Can I continue receiving software updates if I'm still at v3.18 and don't have an SSA?**

A: You can still upgrade to v3.18 without an SSA. However, continued software updates are only available with a valid SSA, which is now available for EntraPass v4.0 customers.

**Q: How do I renew my SSA for my EntraPass system?**

A: SSAs are renewed by using the same process as purchasing a new SSA; purchasing Kantech tokens using the new model numbers located at the end of this Sales Guide. The size of your customer's EntraPass installation, along with the number of installed options, will determine how many tokens will be required to renew their SSA. Customers can verify required SSA tokens in the server registration window of their EntraPass system.

**Q How is technical support affected by the SSA program?**

A: Technical support will not be affected by the SSA program. We will continue to offer technical support for all versions of EntraPass whether an SSA plan is purchased or not. However, customers with v3.18 or earlier versions will need to purchase an upgrade to obtain new features of v4.0 and higher.

# Frequently Asked Questions

## MODEL NUMBERS &amp; DESCRIPTIONS

**SPECIAL EDITION**

E-SPE-EN-V4	.EntraPass Special Edition v4.0 software-English
E-SPE-FR-V4	.EntraPass Special Edition v4.0 software-French
E-SPE-SP-V4	.EntraPass Special Edition v4.0 software-Spanish
E-SPE-UPG-V4	.Upgrade for EntraPass Special Edition v3.x to v4.0
E-SPE-KTK-1	.One Kantech token for EntraPass Special Edition
E-SPE-MAN-EN	.EntraPass Special Edition v4.0 English manual
E-SPE-MAN-FR	.EntraPass Special Edition v4.0 French manual
E-SPE-MAN-SP	.EntraPass Special Edition v4.0 Spanish manual

**CORPORATE EDITION**

E-COR-EN-V4	.EntraPass Corporate Edition v4.0 software-English
E-COR-FR-V4	.EntraPass Corporate Edition v4.0 software-French
E-COR-SP-V4	.EntraPass Corporate Edition v4.0 software-Spanish
E-COR-UPG-EN-V4	.Upgrade for EntraPass Corporate Edition v3.x to v4.0 with English manual
E-COR-WEB-1	.One concurrent EntraPass WebStation connection license for EntraPass Corporate Edition v4.0
E-COR-WEB-3	.Three concurrent EntraPass WebStation connection licenses for EntraPass Corporate Edition v4.0
E-COR-KTK-1	.One Kantech token for EntraPass Corporate Edition
E-COR-KTK-2	.Two Kantech tokens for EntraPass Corporate Edition
E-COR-KTK-3	.Three Kantech tokens for EntraPass Corporate Edition
E-COR-KTK-5	.Five Kantech tokens for EntraPass Corporate Edition
E-COR-KTK-10	.10 Kantech tokens for EntraPass Corporate Edition
E-COR-MAN-EN	.EntraPass Corporate Edition v4.0 English manual
E-COR-MAN-FR	.EntraPass Corporate Edition v4.0 French manual
E-COR-MAN-SP	.EntraPass Corporate Edition v4.0 Spanish manual
E-COR-COM	.40 additional Corporate Gateway licenses for EntraPass Corporate Edition v3.0 and higher
E-COR-SQL	.Card Gateway license for EntraPass Corporate Edition v3.0 and higher
E-COR-VVM	.Video Vault license for EntraPass Corporate Edition v3.0 and higher
E-COR-RDN	.Redundancy Server license for EntraPass Corporate Edition v3.0 and higher
E-COR-WS6	.Six additional workstation licenses for EntraPass Corporate Edition v3.0 and higher
E-COR-MAC	.Account Management (Managed Access Control) license for EntraPass Corporate Edition

## MODEL NUMBERS &amp; DESCRIPTIONS

## GLOBAL EDITION

E-GLO-COM-WIN	.16 additional Global Gateway licenses (Windows NCC) for EntraPass Global Edition v3.0 and higher
E-GLO-EN-V4	.EntraPass Global Edition v4.0 software-English
E-GLO-FR-V4	.EntraPass Global Edition v4.0 software-French
E-GLO-UPG-EN-V4	.Upgrade for EntraPass Global Edition v3.x to v4.0 with English manual
E-GLO-WEB-1	.One concurrent EntraPass WebStation connection license for EntraPass Global Edition v4.0
E-GLO-WEB-3	.Three concurrent EntraPass WebStation connection licenses for EntraPass Global Edition v4.0
E-GLO-KTK-1	.One Kantech token for EntraPass Global Edition
E-GLO-KTK-2	.Two Kantech tokens for EntraPass Global Edition
E-GLO-KTK-3	.Three Kantech tokens for EntraPass Global Edition
E-GLO-KTK-5	.Five Kantech tokens for EntraPass Global Edition
E-GLO-KTK-10	.10 Kantech tokens for EntraPass Global Edition
E-GLO-KTK-20	.20 Kantech tokens for EntraPass Global Edition
E-GLO-MAN-EN	.EntraPass Global Edition v4.0 English manual
E-GLO-MAN-FR	.EntraPass Global Edition v4.0 French manual
E-GLO-CORCOM	.40 Corporate Gateway licenses for EntraPass Global Edition v3.0 and higher
E-GLO-SQL	.Card Gateway license for EntraPass Global Edition v3.0 and higher
E-GLO-VVM	.Video Vault license for EntraPass Global Edition v3.0 and higher
E-GLO-RDN	.Redundancy Server license for EntraPass Global Edition v3.0 and higher
E-GLO-WS1	.One additional workstation license for EntraPass Global Edition v3.0 and higher
E-GLO-WS8	.Eight additional workstation licenses for EntraPass Global Edition v3.0 and higher
E-GLO-MAC	.Account Management (Managed Access Control) license for EntraPass Global Edition

**Data sheets** We have revised the EntraPass Special, Corporate, and Global Edition data sheets to reflect the new features and enhancements in v4.0.

**Product Briefs** We have created 25-, 50-, 75-, 100- and 200-word product briefs for you to use in any of your presentations or proposals.

**Presentation** We have created a new presentation with this launch.

# Sales Tools at a Glance

The presentation is designed to bring our internal sales teams up to speed with new features included with this

new version of EntraPass and Managed Access Control.

**Press Release** We have distributed a press release focused on Managed Access Control to all of the security trade publications.



Product offerings and specifications are subject to change without notice. Actual products may vary from photos. Not all products include all features. Availability varies by region; contact your sales representative. Certain product names mentioned herein may be trade names and/or registered trademarks of other companies.

© 2007 Tyco Safety Products, Canada, Ltd. All rights reserved. KT0101-SG-200711-R01-LT-EN