

Setting Up Remote Dial-up Connections with EntraPass Corporate Edition

OCTOBER 9, 2003

OBJECTIVE

To provide simple instructions in setting up the EntraPass Corporate Edition programming for Dial-up communication using US Robotics Sportster modems and setting up the remote site controller's modem connections.

REQUIREMENTS

1. Registered EntraPass Corporate Edition system V03.11 and later
2. KT-300 Door access controller with Firmware V01.14 and later
3. Dedicated dial-up telephone lines at the Gateway host site
4. Dedicated dial-up telephone line at the Remote controller site
5. At least one US Robotics Sportster External 56k modem (Part #DU-MODEM-HOS) (A second host modem may be used to only receive alarms from the remote site) for the Gateway host site
 - a. DU-MODEM-HOS includes a modem, a DB-9 connector, a DB-25 connector, and a modem cable
6. A modem cable to connect to the Gateway host computer. Please check the computer's connections whether a USB, DB-9 serial, or DB-25 serial cable is required
7. A US Robotics Sportster External 56k modem (Part #DU-MODEM-RS) for the Remote controller site
 - a. DU-MODEM-RS includes a modem, and a CBLK-11 cable kit that consists of a 740-1035 DB-25 Adaptor to connect to the Remote site KT-300 modem, and a CAB-15 flat gray fifteen-foot cable with RJ-11 connectors (inverted) at each end)

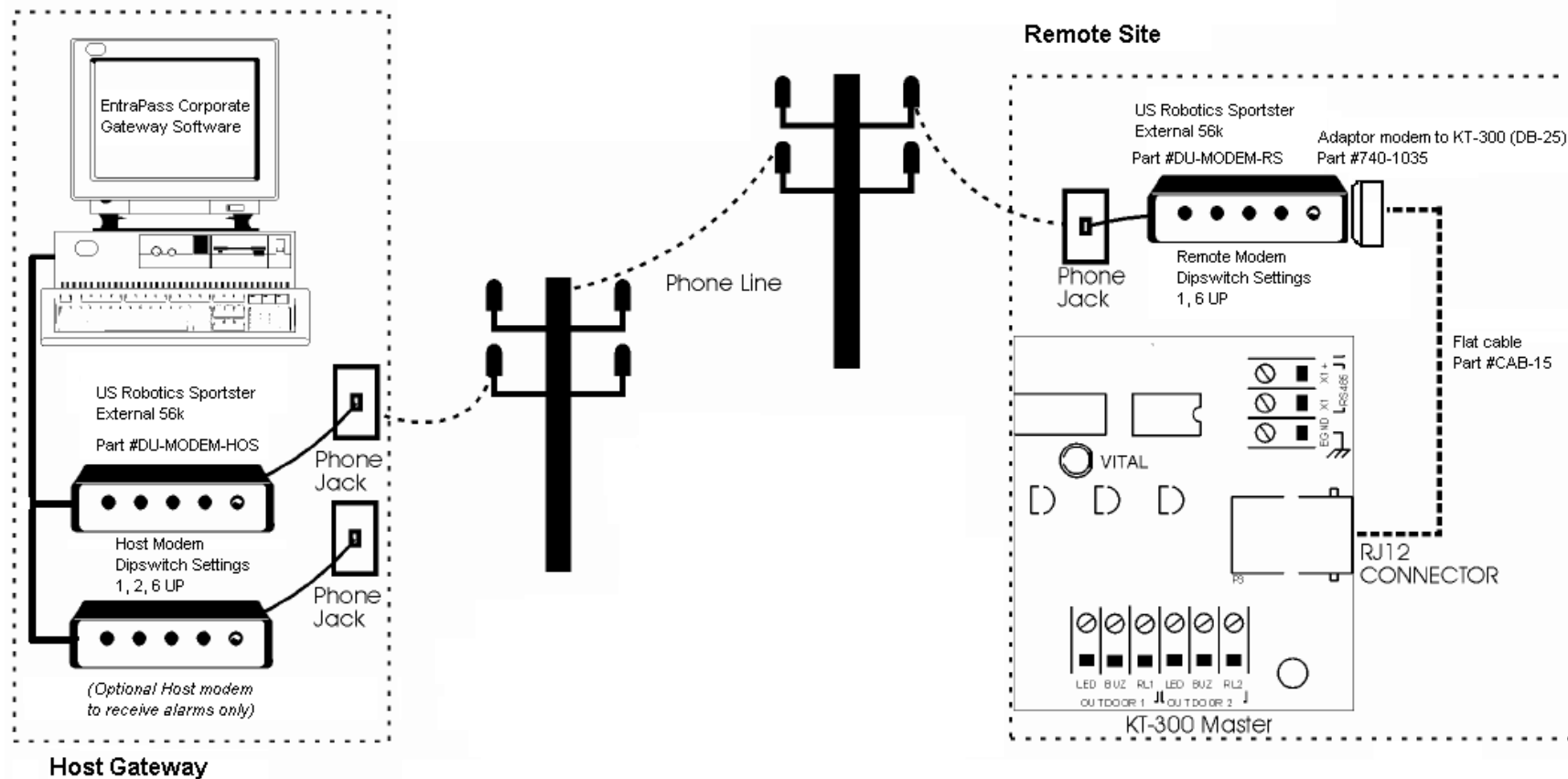
STEPS FOR SETTING UP THE DIAL-UP CONNECTION

1. Connect the modem to the Gateway host and host telephone line
2. Set up the Gateway host modem programming
3. Connect the modem to the Remote site controller and remote site telephone line
4. Set up the Remote site modem programming
5. How to connect and monitor the remote sites

TIPS FOR SUCCESS

1. Always use matching types of modems at the host and the remote sites.
2. If you must use different types of modems, such as V.92 and 56k types, always ensure that the latest technology is connected to the remote site's controller. (i.e. a V.92 modem should be connected to the remote site controller if a 56k is connected to the Gateway host)
3. Never connect the dial-up modem more than fifteen feet from the telephone line
4. Never modify a modem cable to extend its distance from the phone jack
5. Always dedicate the telephone line. Sharing a remote site controller's line with a fax machine is sure to cause eventual problems
6. Before establishing a communication for the first time with the remote site, ensure that the controller is in "hard reset mode"

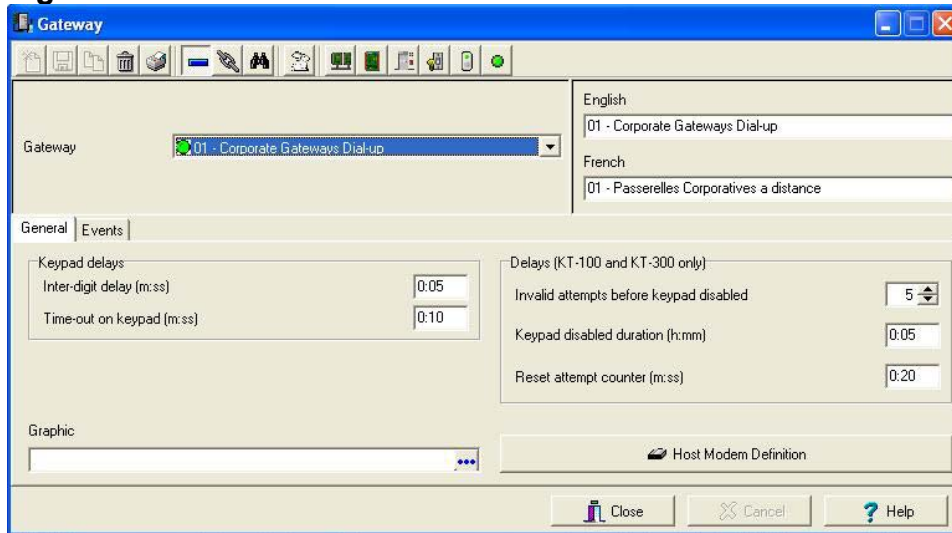
EntraPass Corporate Dial-up Setup with KT-300



PROGRAMMING THE ENTRAPASS CORPORATE GATEWAY (HOST SIDE)

1. Login the workstation, then select the Devices tab, then select the Corporate gateway you wish to program and click on the “Host modem definition button”. (Fig. 1)

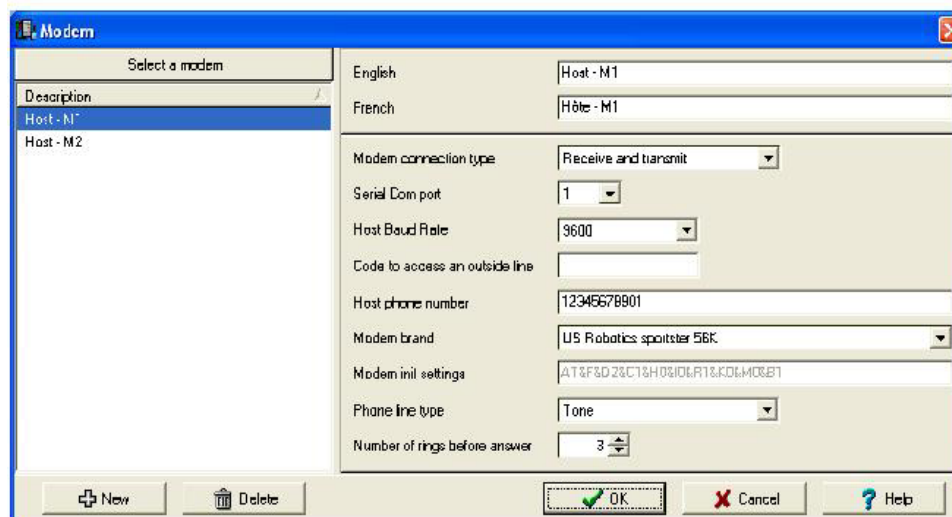
Fig. 1



2. Click on the New button and enter the following parameters: (Fig. 2)
- Modem name
 - Modem connection type (in most cases Receive and transmit)
 - COM port (in most computers port 1 or 2)
 - Baud rate
 - Host phone number
 - Modem brand

Then click on the OK button.

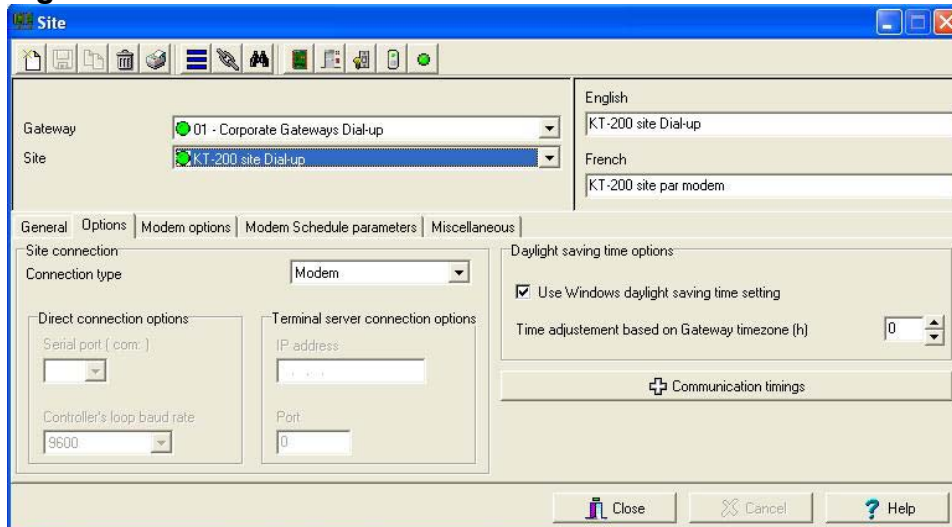
Fig. 2



PROGRAMMING THE REMOTE SITES

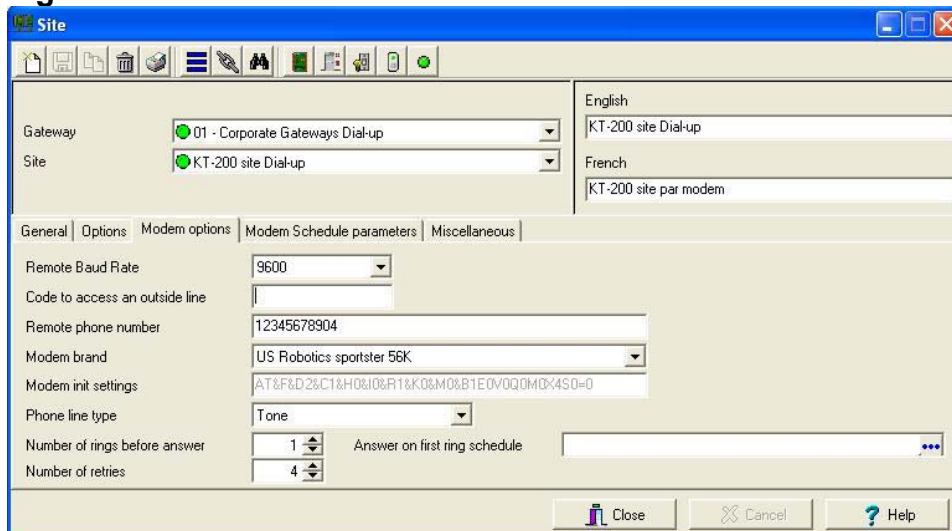
3. Select the Devices tab and select Site (**Fig. 3**)
4. Under the Options tab select Modem as “Connection type”

Fig. 3



5. Under the Modem options tab enter the following information (**Fig. 4**)
 - Remote baud rate (for case of the KT-200 the maximum baud rate is 19,200)
 - Code to access an outside line (when applicable)
 - Remote phone number (this is phone number of the remote loop of controllers)
 - Modem brand
6. Save the modifications

Fig. 4



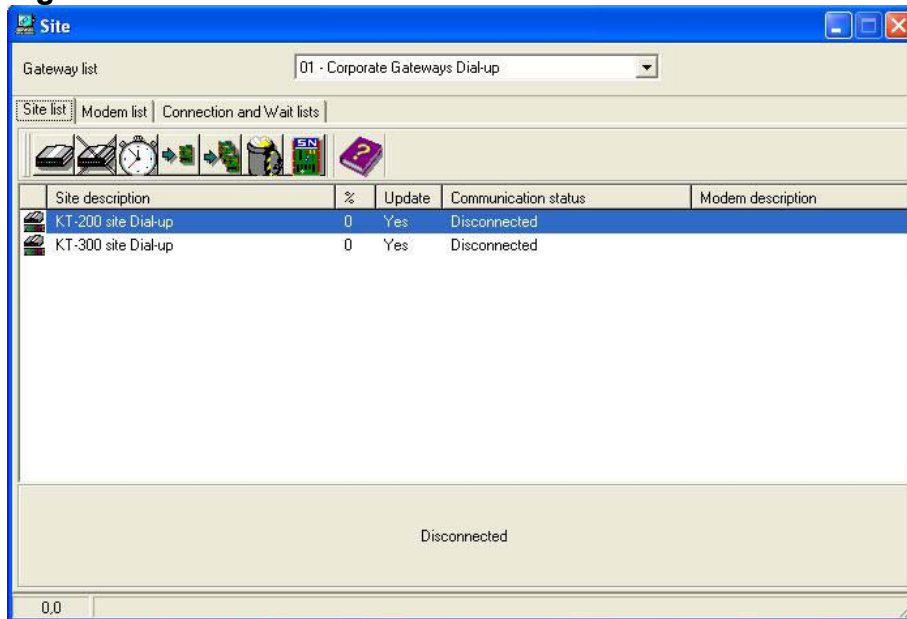
COMMUNICATING WITH THE REMOTE SITES

To establish a communication session with the remote site go to the “Operation” tab and select “Site”. Highlight the site you wish to call and then click on the modem icon from the toolbar. **(Fig. 5)**

Note: When establishing your first communication with the remote controller, the remote site will take the call then hang up and will call back the host computer.

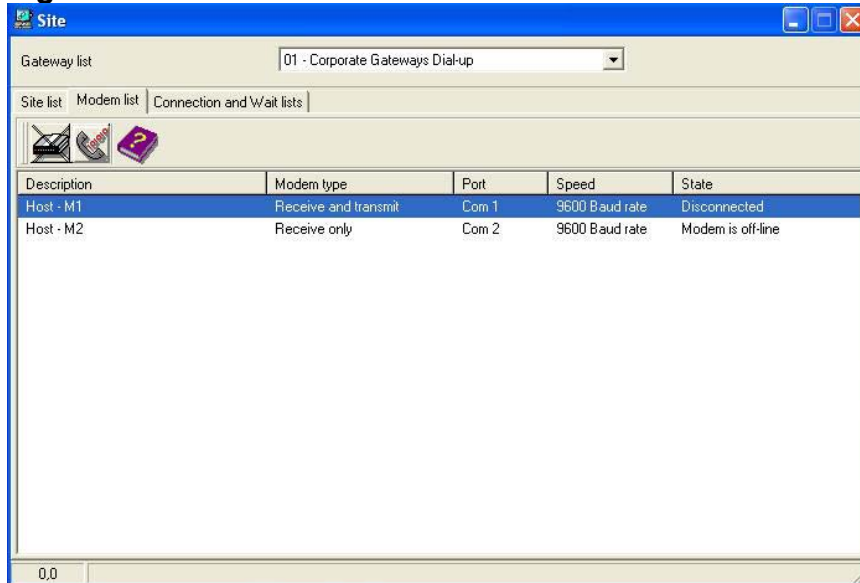
To end a communication with a remote site simply click on the modem icon with a “X”

Fig. 5



The modem list below summarizes all the available modems installed on the host computer and their programming. (Fig. 6)

Fig. 6



- The following screen (Fig. 7) shows the calls in progress as well as the pool list of the sites to be called
 - On the top half of this screen the connection in progress is shown as well as any other connection waiting for the release of the modem.
 - The bottom half of the screen displays a log of the calls were performed but unsuccessful.

Fig. 7

